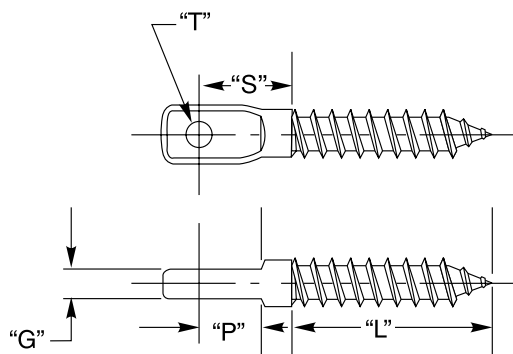


LAG EYE

The Lag Eye fitting is used by screwing the lag threaded end of the fitting into a wooden end post. This will leave a paddle shaped eye exposed that will accommodate a Fixed Jaw, or Adjust-A-Jaw® or Adjust-A-Body® tensioner, or Push-Lock™ fitting with threaded eye.



TYPE 316 STAINLESS STEEL

CABLE DIA.	PART NO.	"G"	"T"	"S"	"L"	"P"	DRILL SIZE REQUIRED	MIN. NOMINAL TIMBER SIZE
1/8"	LE-6	.232"/.228"	.256"	.420"	1.50"	.260"	17/64"	4 X 4
3/16"	LE-6	.232"/.228"	.256"	.420"	1.50"	.260"	17/64"	4 X 4
1/4"	LE-8	.255"/.265"	.385"	1.188"	2.00"	.688"	3/8"	4 X 4

EXTENDED LENGTH LAG EYE WITH 3" THREAD

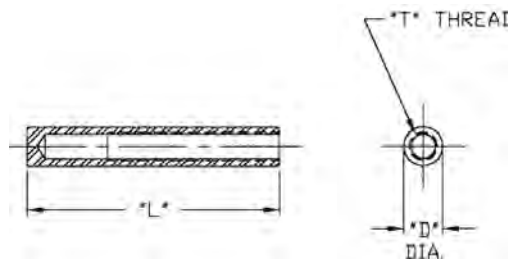
1/8"	LE-6L	.232"/.228"	.256"	.420"	3.00"	.260"	17/64"	4 X 4
3/16"								



WELDED RECEIVER

The Welded Receiver is actually a frame component. The Welded Receiver is used much the same as an Invisiware® receiver and stud, except that the Welded Receiver does not provide for any take-up adjustment after the stud is installed into it. The Welded Receiver is cut to length if necessary and welded into the outside wall of an end post. After the Welded Receiver is welded, the surface that is welded is ground to the original contour, thus hiding the weld. The female thread within the Welded Receiver accommodates our swaging stud. This arrangement creates a completely hidden end post fitting, and

when combined with an Invisiware® receiver and stud on the opposite end of the same cable, makes up our most streamlined combination of hardware.



AVAILABLE IN CARBON STEEL AND STAINLESS STEEL

CABLE DIA.	PART NUMBER	USE WITH STUD NO.	"D"	"T"	"L"
1/8"	W R6 5*	S 4	.437"	5/16 24	2.82"
3/16"		S 6			
1/4"	W R8 5*	S 8	.531"	7/16 20	2.82"

*To specify add "A" for Carbon Steel or "B" for Type 304 Stainless Steel

