

# Push-Lock™ Stop-End Fittings

NON-TENSIONING END

Field-installed Push-Lock fittings make cable railings easy to install on level runs or stairs.

## No field swaging

Push-Lock fittings are designed for use with 1x19 L.H. lay strand only. They can be used with any tensioning device on the other end... but **when used with our swageless tensioners (pages 6-7) both ends can be put on the cable by hand** without any swaging or special tools.

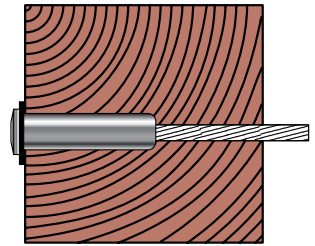
## Easy to install

You can order your cables with a tensioner already on one end or you can install a tensioner on one end on site. Attach the tensioner on one end post, then cut the cable to length based on the Push-Lock™ fitting being used for the job. Push the cable into the Push-Lock™ fitting, tension the cable, and you're done!

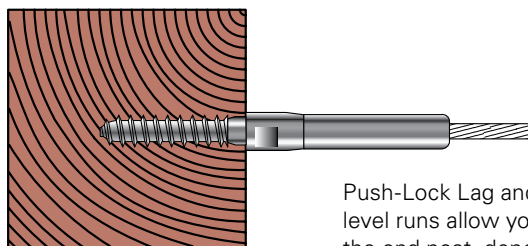
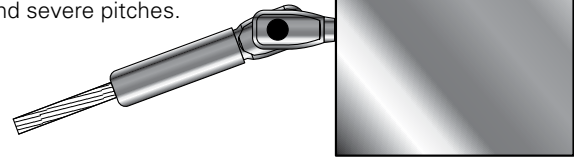


## Four styles make your job easy – in metal or wood

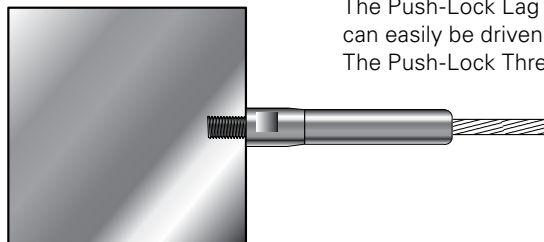
Push-Lock fittings with rounded cap ends rest inside your metal or wood end posts on level runs. The fitting is hidden inside the post, with only the head exposed on the outside of the post.



Push-Lock fittings with threaded eyes mount to lag eyes, tabs or holes on the outside of your metal or wood post for use on stairs and severe pitches.



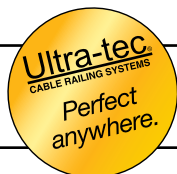
Push-Lock Lag and Threaded Bolt fittings for straight, level runs allow you to lag or thread into the inside of the end post, depending on post composition. The Push-Lock Lag fitting comes in two parts so the lag can easily be driven into the wood post. The Push-Lock Threaded Bolt operates as a single unit.



2  
3/1/12

ISO 9001: 2008 Certified / U.S.A. Manufacturer

**Ultra-tec**  
CABLE RAILING SYSTEMS



1-800-851-2961 ■ 775-885-1443 ■ Fax 775-885-2734

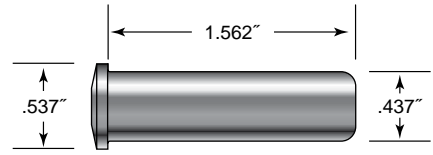
52 Heppner Drive ■ Carson City, NV 89706

E-mail: info@ultra-tec.com Website: www.ultra-tec.com

### For level runs where back side of end post is accessible

Push-Lock fittings (with rounded heads) are used on level runs. They rest in a hole in the end post. When used with an end post 1-1/2" or more in thickness, **the Push-Lock fitting with a rounded head is hidden inside the end post**, with only the head exposed on the outside of the post. Pipe ends are counterbored, so the full perimeter of the head will rest on a flat surface in the pipe. A plastic washer is included and acts as a scratch resistant barrier between the Push-Lock fitting and a metal post. The head rests on the outside wall of a flat-sided metal post or on a stainless steel washer on a wooden post.

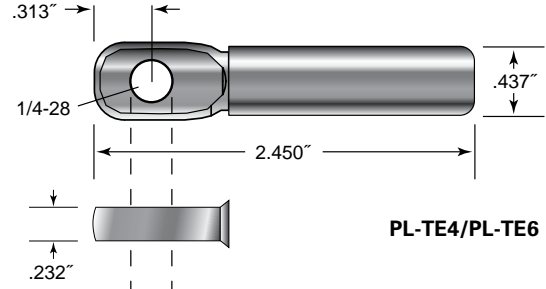
**For wood applications, also order 7-16SAE Washer.**



PL-4/PL-6

### For stairs or severe pitches

Push-Lock fittings with threaded eye ends are for use on stairs. They attach to a wood end post with a lag eye (page 13). See the drawing to determine how to interface this fitting with a metal end post or use our fixed tab or threaded tab (page 20). Mount with an SC-6 screw (page 21).



PL-TE4/PL-TE6

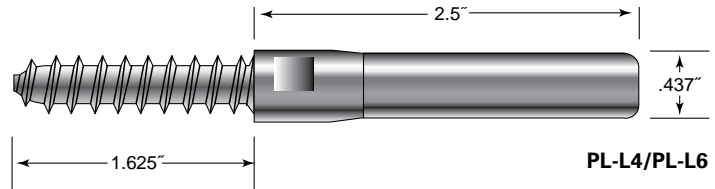
### For level runs where cable must be terminated on the inside of the post

For level runs where the back side of the post is not accessible, so the cable must terminate in a fitting on the inside of the post, the Push-Lock Lag (for wood posts) and the Push-Lock Threaded Bolt (for metal posts) address those needs.

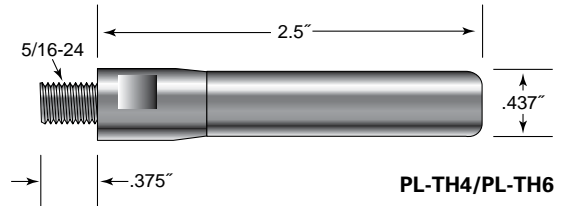
The Push-Lock Lag is actually two components that fit together: the lag and the Push-Lock coupler. The lag is slotted for an Allen wrench on one end to make it easy to screw into the post. Once installed, thread the Push-Lock coupler onto the lag and you're ready to insert the cable.

The Push-Lock Threaded Bolt is a single unit which threads into a pre-drilled and tapped hole. Once securely tightened against the post, you're ready to insert the cable.

Neither the Push-Lock Lag or Push-Lock Threaded Bolt are tensioning devices, so the other end of the cable run will require a tensioner.



PL-L4/PL-L6



PL-TH4/PL-TH6

### Easy to order, easy to install

Select the tensioners you wish to use. If the tensioners are swageless, order the quantity of tensioners, Push-Lock fittings and cable you will need. If you need a tensioner swaged on one end by the factory or a distributor, provide the length of each of your cable runs and the tensioners you wish to use, and your cables will be shipped to you with tensioners on one end and bare cable on the other end. The cables will be a bit longer than you need, and you will cut them to a final length and push them into the Push-Lock fittings when you install the cables in your posts.



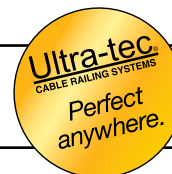
**Push-Lock™ fittings are made of type 316 stainless steel with the exception of internal components that are made of other types of stainless steel. DESIGNED FOR USE WITH 1X19 L.H. LAY STRAND ONLY**

CABLE DIA.		FRAME OPTIONS			USE WITH SCREW NO.	FOR WOOD, USE WITH		FOR METAL RAILINGS, USE WITH MOUNTING TAB NO.
		1-1/2" TUBE or 1-1/4" PIPE	OTHER FRAMES	WOOD		WASHER NO.	LAG EYE NO.	
1/8"	For straight, flat runs, outside of post	PL-4-12*	PL-4	PL-4	NA	7/16SAE	NA	NA
	For stair runs, inside of post	PL-TE4	PL-TE4	PL-TE4	SC-6	NA	LE-6	TT-6B
	For straight, flat runs, inside of post	PL-TH4	PL-TH4	PL-L4	NA	NA	NA	NA
3/16"	For straight, flat runs, outside of post	PL-6-12*	PL-6	PL-6	NA	7/16SAE	NA	NA
	For stair runs, inside of post	PL-TE6	PL-TE6	PL-TE6	SC-6	NA	LE-6	TT-6B
	For straight, flat runs, inside of post	PL-TH6	PL-TH6	PL-L6	NA	NA	NA	NA

\*For appearance, ends are squared (rather than rounded) on PL-4-12 for use with 1-1/2" tubes and 1-1/4" pipe.

ISO 9001: 2008 Certified / U.S.A. Manufacturer

1-800-851-2961 ■ 775-885-1443 ■ Fax 775-885-2734  
 52 Heppner Drive ■ Carson City, NV 89706  
 E-mail: info@ultra-tec.com Website: www.ultra-tec.com



**Ultra-tec®**  
 CABLE RAILING SYSTEMS