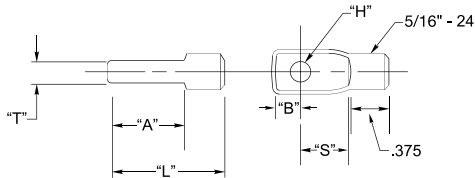


Mounting Aids



Invisiware® Threaded Tab

Here's a real time and money-saver. The Invisiware® threaded tab screws into a drilled and tapped hole on the inside wall of the end post for mounting an Adjust-A-Jaw® or Adjust-A-Body® tensioner, Ultra-tec® Fixed Jaw, or Push-Lock™ fitting with threaded eye. **You save the expense of welding tees or tabs onto your end post.** Recommended only when you are using a minimum schedule 80 pipe end post or a square or rectangular steel end post with a minimum .250" wall.



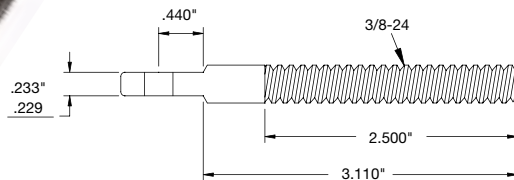
TYPE 316 STAINLESS STEEL

CABLE DIA.	PART NO.	"H"	"S"	"T"	"A"	"B"	"L"
1/8"	TT-6B	.265"	.500"	.233"/.229"	.813"	.313"	1.250"
3/16"	TT-6B	.265"	.500"	.233"/.229"	.813"	.313"	1.250"
1/4"	TT-8B	.390"	.625"	.295"/.285"	1.250"	.375"	1.625"
5/16"	TT-8B	.390"	.625"	.295"/.285"	1.250"	.375"	1.625"
3/8"	TT-8B	.390"	.625"	.295"/.285"	1.250"	.375"	1.625"

Mounting Aids

Invisiware® Extended Length Threaded Tab

Extended length, same as above except there is no need to thread the hole in your end post. Cut to desired length and secure to end post with acorn nut and thread sealant.



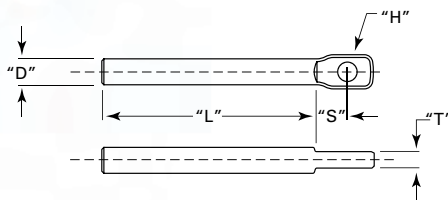
CABLE DIA.	PART NO.	Use with S.S. Acorn Nut*
1/8" & 3/16"	TT-6B-L	AN-3/8-24-S

*Order Acorn Nut separately (see page 21).



Invisiware® Fixed Tab

Welded into an end post to make **a strong tab for use in mounting an Adjust-A-Jaw® or Adjust-A-Body® tensioner, Ultra-tec® Fixed Jaw, or Push-Lock™ fitting with threaded eye.** The Invisiware® fixed tab is cut to length if necessary, inserted in a hole drilled through the post and welded to the outside wall. The welded surface is then ground to the original contour of the post, thus hiding the weld.



AVAILABLE IN CARBON STEEL AND STAINLESS STEEL

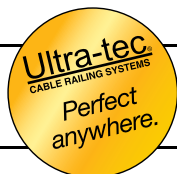
CABLE DIA.	PART NO.	"D"	"H"	"S"	"T"	"L"
1/8"	F-T6-5*	.375"	.265"	.44"	.233"/.229"	3.11"
3/16"	F-T6-5*	.375"	.265"	.44"	.233"/.229"	3.11"
1/4"	F-T8-5*	.562"	.390"	.68"	.295"/.285"	3.00"

*Specify "A" for Carbon Steel or "B" for Type 304 Stainless Steel

20
3/1/12

ISO 9001: 2008 Certified / U.S.A. Manufacturer

Ultra-tec®
CABLE RAILING SYSTEMS



1-800-851-2961 ■ 775-885-1443 ■ Fax 775-885-2734

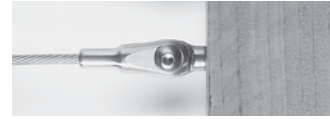
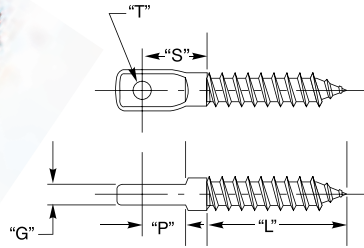
52 Heppner Drive ■ Carson City, NV 89706

E-mail: info@ultra-tec.com Website: www.ultra-tec.com



Ultra-tec® Lag Eye

A convenient, easy-to-install means for attaching an Adjust-A-Jaw® or Adjust-A-Body® tensioner, Ultra-tec® Fixed Jaw, or Push-Lock™ fitting with threaded eye to a wood post.



Post with an Ultra-tec® Fixed Jaw attached.

TYPE 316 STAINLESS STEEL

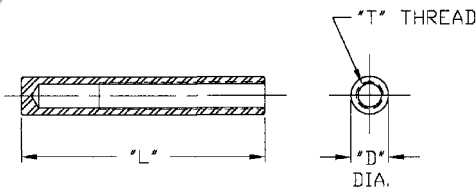
CABLE DIA.	PART NO.	"G"	"T"	"S"	"L"	"P"	DRILL SIZE REQUIRED	MIN. NOMINAL TIMBER SIZE
1/8"	LE-6	.232"/.228"	.256"	.420"	1.50"	.260"	17/64"	4 X 4
3/16"	LE-6	.232"/.228"	.256"	.420"	1.50"	.260"	17/64"	4 X 4
1/4"	LE-8	.255"/.265"	.385"	1.188"	2.00"	.688"	3/8"	4 X 4

EXTENDED LENGTH LAG EYE WITH 3" THREAD

1/8"	LE-6L	.232"/.228"	.256"	.420"	3.00"	.260"	17/64"	4 X 4
3/16"								

Invisiware® Welded Receiver

A fixed end, non-tensioning device, the Invisiware® welded receiver provides **a sturdy, threaded receptacle in the end post for an Invisiware® swaging stud (see page 9)**. The Invisiware® welded receiver is cut to length if necessary, inserted in a hole drilled through the post and welded to the outside wall. The welded surface is then ground to the original contour of the post, thus hiding the weld.



AVAILABLE IN CARBON STEEL AND STAINLESS STEEL

CABLE DIA.	PART NO.	USE WITH STUD NO.	"D"	"T"	"L"
1/8"	W-R6-5*	S-4	.437"	5/16-24	2.82"
3/16"	W-R6-5*	S-6	.437"	5/16-24	2.82"
1/4"	W-R8-5*	S-8	.531"	7/16-20	2.82"

*Specify "A" for Carbon Steel or "B" for Type 304 Stainless Steel

Mounting Screws

Stainless steel socket-head screws for mounting Adjust-A-Jaw® and Adjust-A-Body® with Threaded Eye tensioners, Ultra-tec® Fixed Jaws, or Push-Lock™ fittings with threaded eye.



PART NO.	THREAD	Used with Hardware for Cable Diameters
SC-6	1/4-28	1/8", 3/16"
SC-8	3/8-24	1/4", 5/16", 3/8"

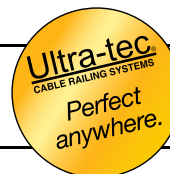
Stainless Steel Washers and Nuts



PART NO.		WASHER O.D.	WASHER I.D.	USED WITH HARDWARE FOR CABLE DIAMETERS
7/16SAE	WASHER	59/64"	15/32"	1/8" and 3/16"
1/2SAE	WASHER	1-1/16"	17/32"	1/4"
AN-3/8-24-S	ACORN NUT	Used with Extended Length Threaded Tab		

ISO 9001: 2008 Certified / U.S.A. Manufacturer

1-800-851-2961 ■ 775-885-1443 ■ Fax 775-885-2734
 52 Heppner Drive ■ Carson City, NV 89706
 E-mail: info@ultra-tec.com Website: www.ultra-tec.com



Ultra-tec®
CABLE RAILING SYSTEMS